

WHAT MAKES OUR CONNECTIVITY UNIQUE

Palladium's connectivity makes it the most efficient and cost effective solution for the Business with **Remote Branches** or **Departments** or in environments with **unreliable connections** or **wireless networks**. While all other companies cater for a single-tier connection string, Palladium Offers Multiple Connection Types to handle connections to Multiple different environments all from the same terminal or remote PC.

How it Works

Palladium uses an embedded VPN type connection for all its Network and remote database (internet based) connections. The reason this connectivity is far superior over any other type of connection is that it doesn't make use of any additional software and releases the database connection when there are no transaction updates being done. The entire Palladium Software application is installed on the local pc (terminal) and all that Palladium does is "call from", and "update to" the database dynamically, on-demand. Because of this, all reports are printed using the specific users local print settings and, unlike the "other" remote software applications, there is absolutely no functionality lost by connecting "remotely". In fact users connecting to a remote company (over the internet) then a local company (either on their Local Network or Local Machine) would not notice any difference at all, provided their internet connection is stable.

To take this a step further, Palladium establishes intelligent, on-demand, connections to the database. This means that Palladium only accesses the database on a need basis then immediately drops the connection. What this does is almost eliminate internet interruptions and even local network instability connections, and of course allows users to use wireless network connectivity with confidence. More importantly this connection form will support the most unstable network or wireless network connection as we probably connect to the database 1/100th of the total login time.

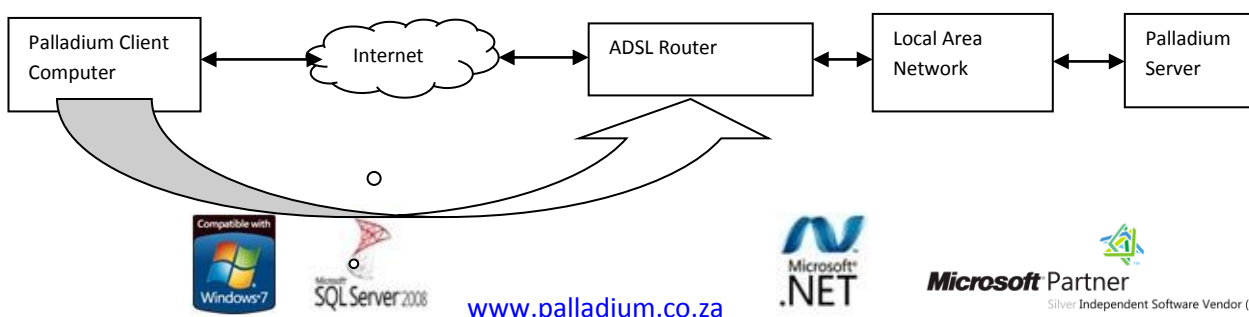
Another big advantage of the on-demand connection is that if the connection is lost and re-established, Palladium doesn't miss a beat so users don't need to re-establish a session. This eliminates any rebooting or resetting of servers and completely eliminates ANY admin for resellers who are offering hosted databases to their clients.

Put us to the test – setup a remote database (via the internet or just on your local network), open an invoice, add items, then unplug your network cable. Then reconnect the cable and update your invoice – no problems at all!

Setting Up A "Remote" Internet-Based Connection

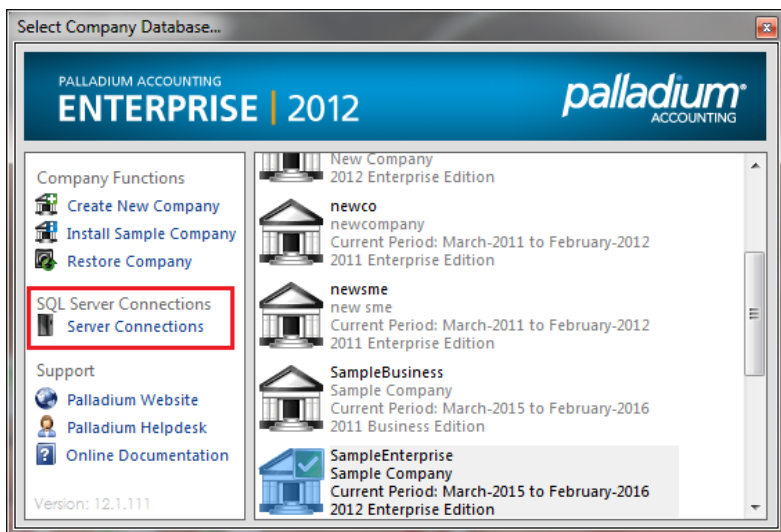
As mentioned the VPN functionality on Palladium allows you to seamlessly log in remotely to any Palladium Database located anywhere from your local PC, local network, or anywhere else in the world, the latter provided you have an internet connection. This allows users to work from home connecting directly to the Server at the office, or simply to access a client's system. It also makes it possible for organisations with several depots countrywide or worldwide to use one server and transact on the same company, or have multiple companies all running on one server. All this without having to purchase any additional remote software.

This technology lends itself to any company (Accounting, ISP, Financial institution or any other) offering its clients a partial-hosted solution (PaaS- Platform as a service) with an insurmountable number of spinoffs and advantages. The Diagram below illustrates the VPN concept for remote (internet) VPN Connections.

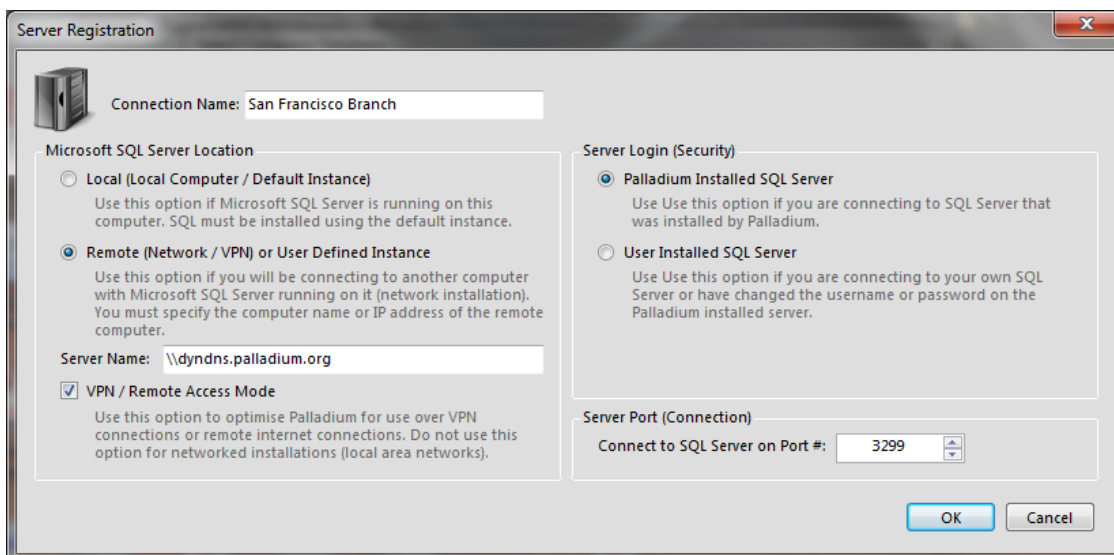


Setting Up the Connections In Palladium

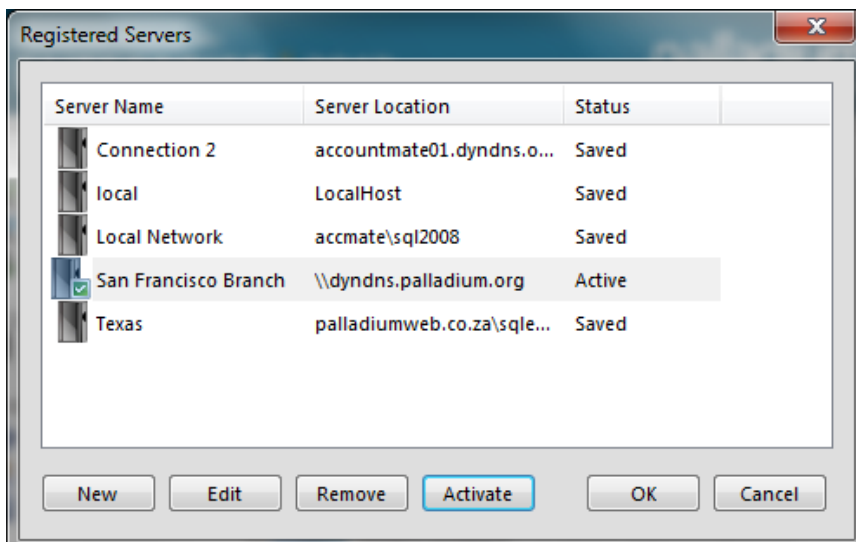
To setup a connection in Palladium, after opening Palladium, select the Server Connections function.



Then Create Your Database Connection and define whether it is a local or wide-area connection. There is also a “VPM/Remote Access Mode” function that allows you to switch off the auto-refreshing of minimised Palladium Reports to optimise bandwidth issues.



Once this is setup you can switch from connection to connection type with ease.



Printing In a Multi-Store / Branch Setup

Palladium not only has the ability to utilise global or per-user document numbering on all processing documents, but also has the ability to use unique layouts per user as well as to define the default printer on a per user, per document basis, completely alleviating the need for users in warehouses, branches, departments or sales offices to have to keep on changing or selecting their required printer. This function could also be used to invoice specific clients with a custom invoice layout for their unique requirements.

Simply select between a Local or Global reporting cache. Once the Local Cache has been selected, you can setup the default layout as well as the default printer per document. In the screen below you will define the location of the default path. Should it be blank then Palladium will simply use the system default.

Forms Setup (Local - STEPHEN)

Collection: Receivables - Email, Payables, Payables - Email, Payables - Printers, Warehouse, Warehouse - Printers
Receivables: Receivables - Printers, Invoices, Invoices - Printers, Freehand Quotes, Freehand Quotes - Printers

Sales Quote: C:\Program Files\Palladium Software\Palladium 2012 Enterprise\Forms\Ent_Sales
Sales Order:
Credit Request:
Delivery Note:
Statement:
Statement (BBF):
Statement (Sales):
Receipt:

Do not store custom forms in the forms templates folders in the installation directory.
Use UNC paths for networked installations (\\PC\FORMS\FORMNAME.RPT)

Clear All Sets Clear All Local Sets Clear Local Set Save Cancel

Below you can even define the overriding default printer per document.

Forms Setup (Local - STEPHEN)

Collection: Receivables - Email, Payables, Payables - Email, Payables - Printers, Warehouse, Warehouse - Printers
Receivables: Receivables - Printers, Invoices, Invoices - Printers, Freehand Quotes, Freehand Quotes - Printers

Sales Quote: HP LaserJet 3055 PCL5 Use Default
Sales Order: hp LaserJet 3015 PCL 5 Use Default
Credit Request: \\192.168.0.20\HP Deskjet F2200 series Use Default
Delivery Note: \\192.168.0.22\hp LaserJet 3015 PCL 6 Use Default
Statement: \\192.168.0.22\HP Color LaserJet CP1215 Use Default
Statement (BBF): Use Default
Statement (Sales): Use Default
Receipt: Use Default

Do not store custom forms in the forms templates folders in the installation directory.
Use UNC paths for networked installations (\\PC\FORMS\FORMNAME.RPT)

Clear All Sets Clear All Local Sets Clear Local Set Save Cancel



Linking Users to Warehouses

Each user will get assigned to a default processing warehouse. This gets done un the user-setup.

System User

User Name: RichieRich

User Information | Access Rights | Document Numbers | GL Security | Login History | Statistics

Full Name: Richie Rich

Cell Number: () - -

Email Address:

Password: (5 char)

Again:

Default Location: FortLauder

A username, full name, password(s), and at least one permission assignment are required to setup a user. To promote system security, each user will be required to change their password whenever you modify it (or first assign it). If the account is marked as locked out, the user will not be able to gain access to the system until it is unlocked by an administrator. Administrative users cannot be locked out. Administrative users cannot demote their own accounts to non-administrative levels.

Must Change Password Account Locked Out User is Administrator

OK Cancel

Managing Returns

In a wide-area type environment it is important for the small user to manage returns. Palladium does this effectively using its Credit Request Function, coupled with the Credit Reason Codes. Once the manager is happy they can simply approve the credit return accordingly. You can read more about this on the product Feature section on the Palladium Website ([here](#)).

Sales Order

File Edit View Navigate Sales Report

New Open Adjust Convert Project Lines Upsell Item Record Print 1

Customer: TST001 Ship To: Credit Request

Ashburton Reinforcing
Level 2, 24 Richardson St.
Perth Western Australia WA6872
UK

Jhb North

Doc Number: CR-00000002

Date: 01 March 2015

Required: 06 March 2015

Reference #: Return for Credit

Number	Location	Description	Qty	Unit	Price	Discount %	Tax Code	Tax	Amount
2kgTomatoes	DEFAULT	2Kg Tomatoes	-5	2Kg Packs	1 310.94	0.00	01	-917.66	-6 554.70

Department: 1000 Sample Dept 1 Status: Quote Sent

Terms: 30 Days From Invoice Sales Person: John Smith

Additional Info:

Subtotal:	-6 554.70
Discount:	0.00
Tax:	-917.66
Total:	-7 472.36

Combined Transaction Sample Company

