

Understanding Manufacturing in Palladium

This feature is currently available on the **Palladium Business & Enterprise 2011/2** versions only.

Feature Overview:

This feature allows you to create Bills of Materials, Create Jobs and Assemble or Disassemble jobs. In addition the function allows users to set Bills to Kit on the Fly, offering a complete, basic manufacturing solution.

How Does This Feature Help Your Business?

- The Manufacturing facility allows you to assemble items as finished goods on the fly at time of sale.
- Manage Economic Manufacturing Quantities by creating Bills for more than one item
- Assemble or disassemble Jobs to cater for decanting or the manufacturing of items with by-products

FEATURE OPTIONS

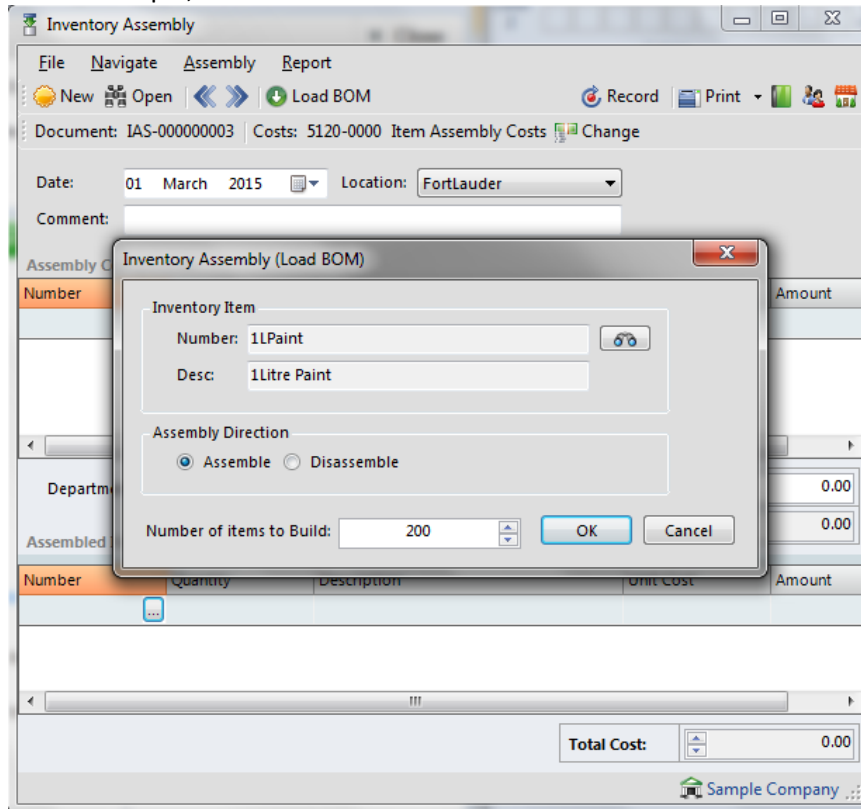
Manufacture one or more Finished Goods Items

Palladium caters for basic Manufacturing with the facility to open a job, manufacture multiple finished goods items (such as by-products) as well the ability to add additional costs. If you refer below you will see that we have manufactured 195L Paint with an additional 5L of Waste.

The screenshot shows the 'Inventory Assembly' window. At the top, there is a menu bar with 'File', 'Navigate', 'Assembly', and 'Report'. Below the menu bar is a toolbar with icons for 'New', 'Open', 'Load BOM', 'Record', and 'Print'. The main area displays document information: 'Document: IAS-000000003 | Costs: 5120-0000 Item Assembly Costs | Change'. Below this, there are fields for 'Date: 01 March 2015' and 'Location: FortLauder'. A 'Comment' field contains 'Manufacture 200L Paint'. The 'Assembly Components' table lists: Packaging (10 packaging Boxes, 12.00 unit cost, 120.00 amount), PaintContainers-1L (200 1L Paint Containers, 8.65 unit cost, 1 730.00 amount), Pigments (1 Paint Pigment, 500.00 unit cost, 500.00 amount), and Water-distilled (199 Distilled Water, 0.00 unit cost, 0.00 amount). Below the table, the 'Department' is set to '1000 Sample Dept 1'. To the right, 'Add Costs' is 800.00 and 'Total Cost' is 3 150.00. The 'Assembled Items' table lists: 1LPaint (195 1Litre Paint, 16.1538 unit cost, 3 150.00 amount) and waste (5 Waste Paint, 0.00 unit cost, 0.00 amount). At the bottom right, the 'Total Cost' is 3 150.00. The window title bar says 'Sample Company'.

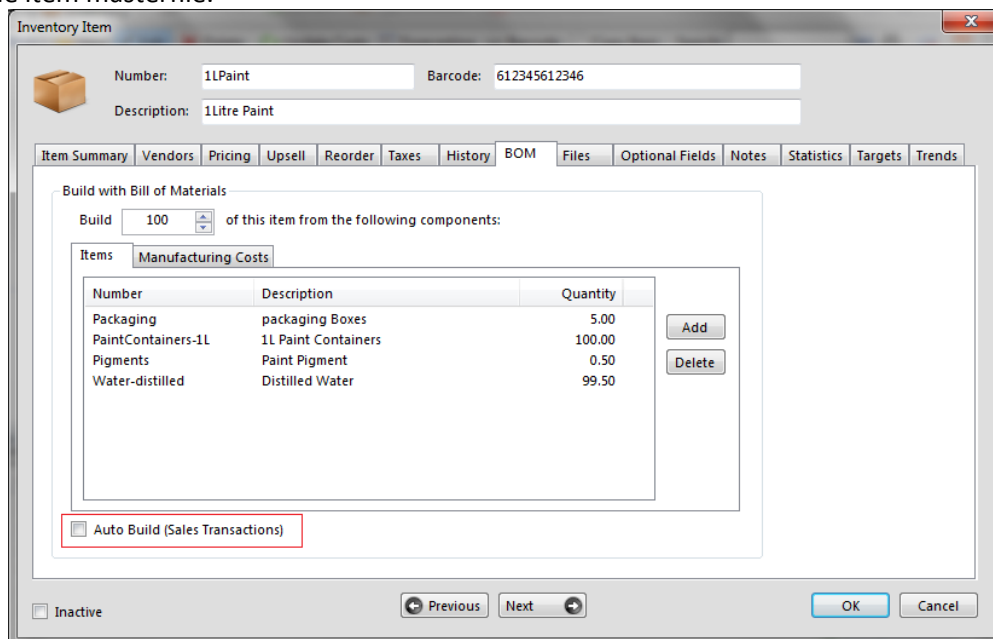
Create Assemble or Disassemble Jobs

A Disassemble Facility allows you to set bills for a Reverse Manufacture or Disassemble process. An example where this may be used is in the Butchery Profession in the breakdown of a Carcass, or used to simply decant large drums of liquids into multiple, smaller derivatives.



Build/Kit On The Fly

The Kit-On-The-Fly function also allows you to set prices for a set quantity of items (say 6-of) and when invoicing the system will draw 6 off the base item. All you need to do is activate the function on the BOM Setup tab situated on the item masterfile.

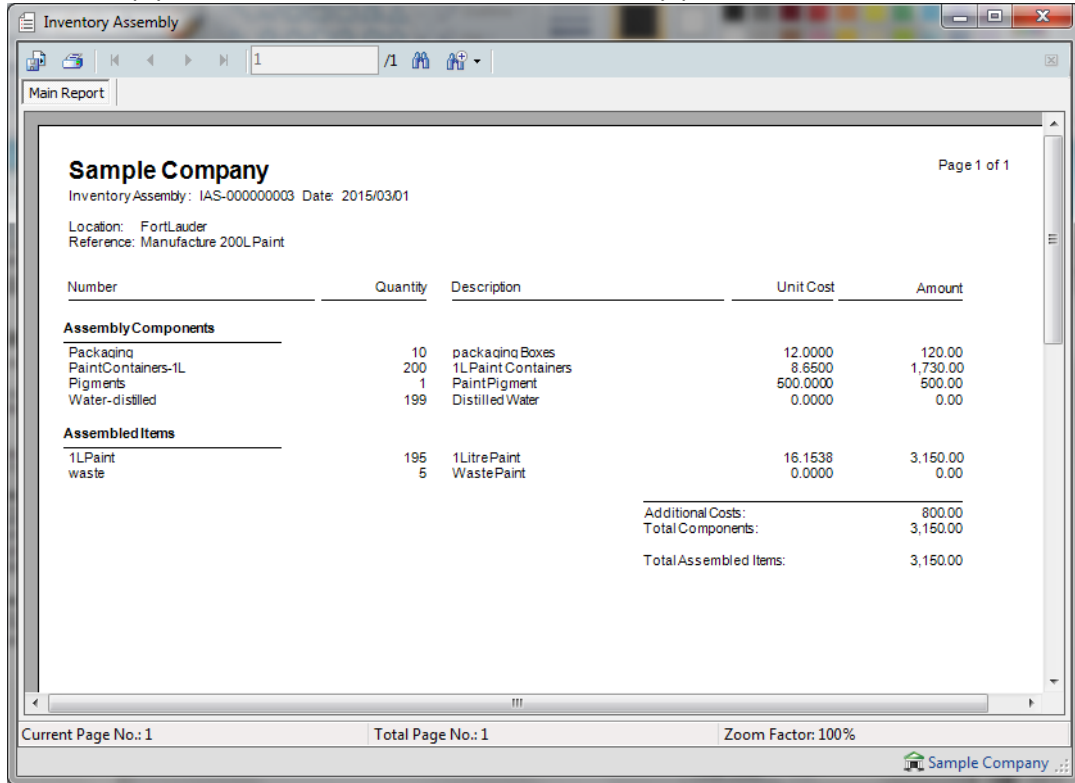


Set Economic Manufacture Quantities

Palladium has the function to set a Standard Bill Of Material to Manufacture a Pre-Defined Quantity, say 100L of Paint, making the Bill Of Material a practical and straight-forward process. This alleviates the needs to break down the bill to a base unit quantity as set in traditional SME accounting software companies. If you refer to the screen on the Kit-On-The-Fly feature above you will see that the Bill is for a Quantity of 100 items.

Print Job Cards

With Palladium you can print job cards to issue raw materials and record additional costs in the form of service items, or use it to simply record the manufactured items and/or by-products.



Inventory Assembly

Main Report

Sample Company Page 1 of 1

Inventory Assembly: IAS-00000003 Date: 2015/03/01

Location: FortLauder
Reference: Manufacture 200LPaint

Number	Quantity	Description	Unit Cost	Amount
Assembly Components				
Packaging	10	packaging Boxes	12.0000	120.00
PaintContainers-1L	200	1LPaint Containers	8.6500	1,730.00
Pigments	1	PaintPigment	500.0000	500.00
Water-distilled	199	DistilledWater	0.0000	0.00
Assembled Items				
1LPaint	195	1LitrePaint	16.1538	3,150.00
waste	5	WastePaint	0.0000	0.00
Additional Costs:				800.00
Total Components:				3,150.00
Total Assembled Items:				3,150.00

Current Page No.: 1 Total Page No.: 1 Zoom Factor: 100%

Sample Company