




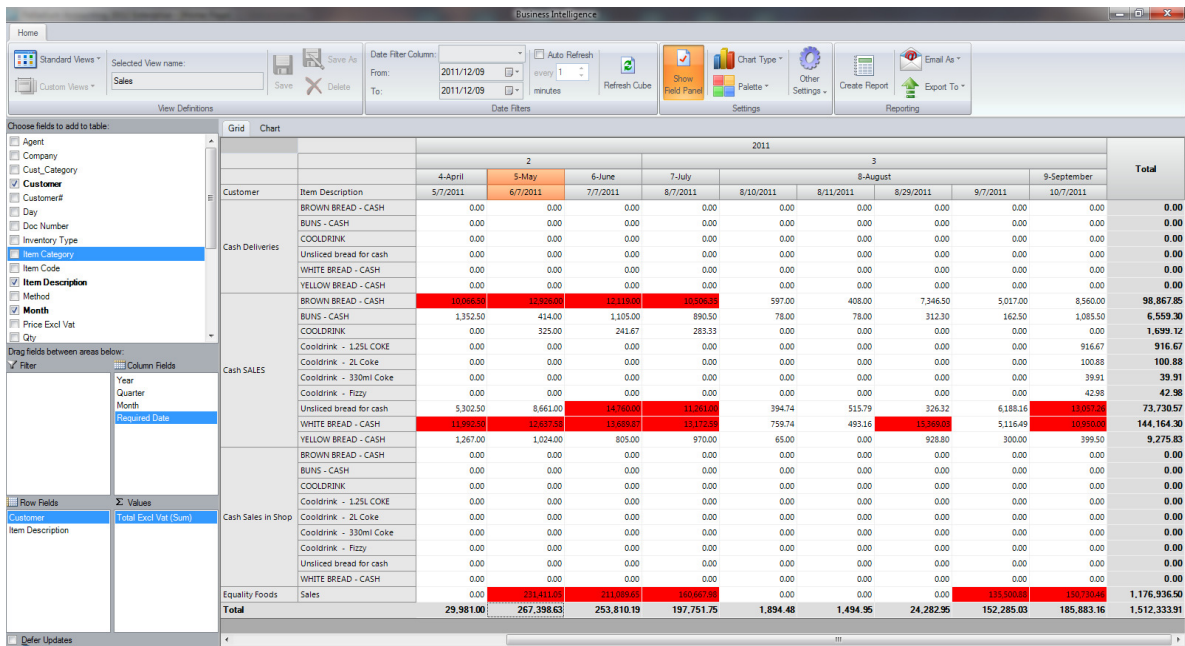
This documents contains the release notes for the Palladium 2012 Update 2 release, dated January 2012.

Table of Contents

Palladium Individual (V12.1.120).....	2
Palladium Business (V12.1.250).....	3
Palladium Enterprise (V12.1.150).....	4
Palladium Remote Sales Terminal (RST) (V12.1.30)	8

Palladium Individual (V12.1.120)


1. Google Maps has been integrated to all areas of the application from masterfiles to processing documents that includes an address, allowing you to obtain a map to a customer or supplier in a click. Lookout for the location pin icon .
2. AP (Reports) – Created a new Supplier Transaction Report, with the filtering of Vendors.
3. AR (Reports) – Created a new Customer Transaction Report, with the filtering of Customers.
4. A new Business Intelligence OLAP section has been added to the application with Standard Data Views. The ability to modify views or to save settings is only available in the Enterprise Edition.

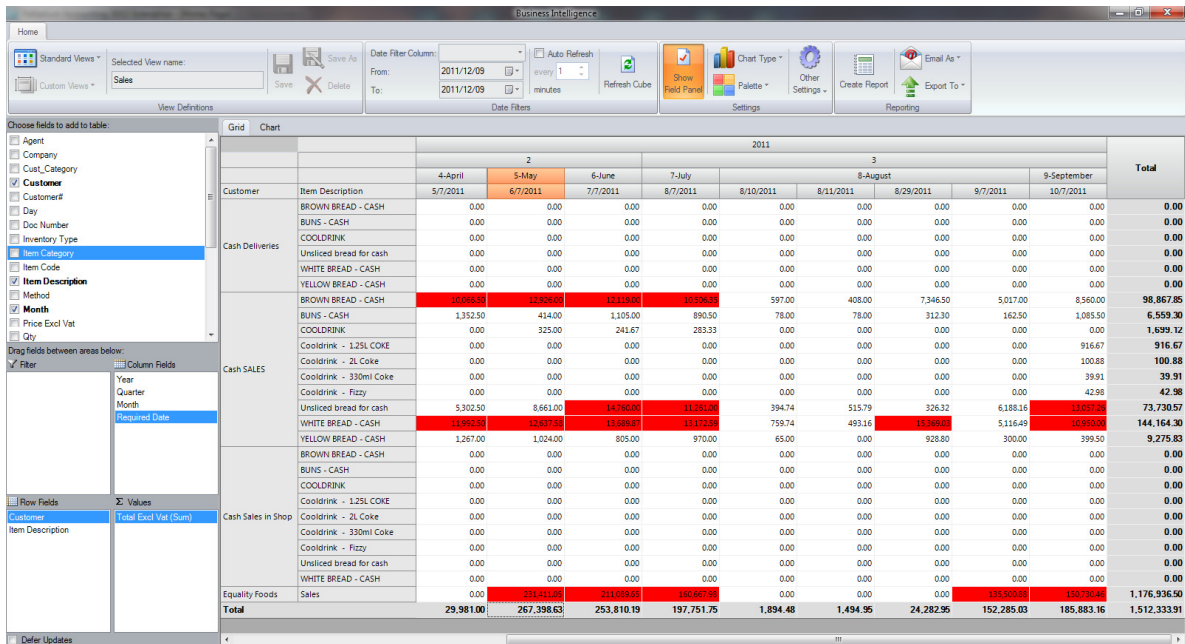


		2011										Total
		4-April	5-May	6-June	7-July	8/10/2011	8/11/2011	8/29/2011	9/7/2011	9-September	10/7/2011	
Cash Deliveries	BROWN BREAD - CASH	0.00	0.00	0.00	0.00	0.00	0.00	0.00	0.00	0.00	0.00	0.00
	BUNS - CASH	0.00	0.00	0.00	0.00	0.00	0.00	0.00	0.00	0.00	0.00	0.00
	COOLDRINK	0.00	0.00	0.00	0.00	0.00	0.00	0.00	0.00	0.00	0.00	0.00
	Unsliced bread for cash	0.00	0.00	0.00	0.00	0.00	0.00	0.00	0.00	0.00	0.00	0.00
	WHITE BREAD - CASH	0.00	0.00	0.00	0.00	0.00	0.00	0.00	0.00	0.00	0.00	0.00
	YELLOW BREAD - CASH	0.00	0.00	0.00	0.00	0.00	0.00	0.00	0.00	0.00	0.00	0.00
	BROWN BREAD - CASH	10,096.30	13,320.00	12,113.00	10,508.21	597.00	408.00	7,346.50	5,017.00	6,560.00	98,867.85	
	BUNS - CASH	1,352.50	414.00	1,105.00	890.50	78.00	312.30	162.50	1,085.50	1,659.30	6,559.30	
	COOLDRINK	0.00	325.00	241.67	283.33	0.00	0.00	0.00	0.00	0.00	1,639.12	
	Cooldrink - 1.25L COKE	0.00	0.00	0.00	0.00	0.00	0.00	0.00	0.00	0.00	916.67	
Cash SALES	0.00	0.00	0.00	0.00	0.00	0.00	0.00	0.00	0.00	100.88		
Cooldrink - 330ml Coke	0.00	0.00	0.00	0.00	0.00	0.00	0.00	0.00	0.00	39.91		
Cooldrink - Fizzy	0.00	0.00	0.00	0.00	0.00	0.00	0.00	0.00	0.00	42.98		
Unsliced bread for cash	5,302.50	8,661.00	14,760.00	11,261.00	394.74	515.79	326.32	6,188.16	11,017.26	73,730.57		
WHITE BREAD - CASH	11,992.30	12,637.35	13,669.87	13,172.31	759.74	493.16	13,369.03	5,116.49	16,950.00	144,164.30		
YELLOW BREAD - CASH	1,267.00	1,024.00	805.00	970.00	65.00	0.00	928.80	300.00	399.50	9,275.83		
BROWN BREAD - CASH	0.00	0.00	0.00	0.00	0.00	0.00	0.00	0.00	0.00	0.00		
BUNS - CASH	0.00	0.00	0.00	0.00	0.00	0.00	0.00	0.00	0.00	0.00		
COOLDRINK	0.00	0.00	0.00	0.00	0.00	0.00	0.00	0.00	0.00	0.00		
Cooldrink - 1.25L COKE	0.00	0.00	0.00	0.00	0.00	0.00	0.00	0.00	0.00	0.00		
Cooldrink - 2L Coke	0.00	0.00	0.00	0.00	0.00	0.00	0.00	0.00	0.00	0.00		
Cooldrink - 330ml Coke	0.00	0.00	0.00	0.00	0.00	0.00	0.00	0.00	0.00	0.00		
Cooldrink - Fizzy	0.00	0.00	0.00	0.00	0.00	0.00	0.00	0.00	0.00	0.00		
Unsliced bread for cash	0.00	0.00	0.00	0.00	0.00	0.00	0.00	0.00	0.00	0.00		
WHITE BREAD - CASH	0.00	0.00	0.00	0.00	0.00	0.00	0.00	0.00	0.00	0.00		
Equality Foods	0.00	0.00	0.00	0.00	0.00	0.00	0.00	0.00	0.00	0.00		
Sales	0.00	214,418.81	241,808.86	168,679.84	0.00	0.00	0.00	152,285.03	152,285.03	1,176,936.50		
Total		29,981.00	267,398.63	253,810.19	197,751.75	1,834.48	1,494.96	24,282.95	152,285.03	185,883.16	1,512,333.91	

5. All Reports– Included buttons for Email and Export (PDF, Excel & Word).
6. Start-Up Screen (Server Connections) – We have added the ability to setup multiple data connections to allow a setup where users can connect to a SQL Session on the local machine or on another computer, including a VPN connection.

Palladium Business (V12.1.250)

1. Google Maps has been integrated to all areas of the application from masterfiles to processing documents that includes an address, allowing you to obtain a map to a customer or supplier in a click. Lookout for the location pin icon .
2. AP (Reports) – Created a new Supplier Transaction Report, with the filtering of Vendors.
3. AR (Reports) – Created a new Customer Transaction Report, with the filtering of Customers.
4. A new Business Intelligence OLAP section has been added to the application with Standard Data Views. The ability to modify views or to save settings is only available in the Enterprise Edition.

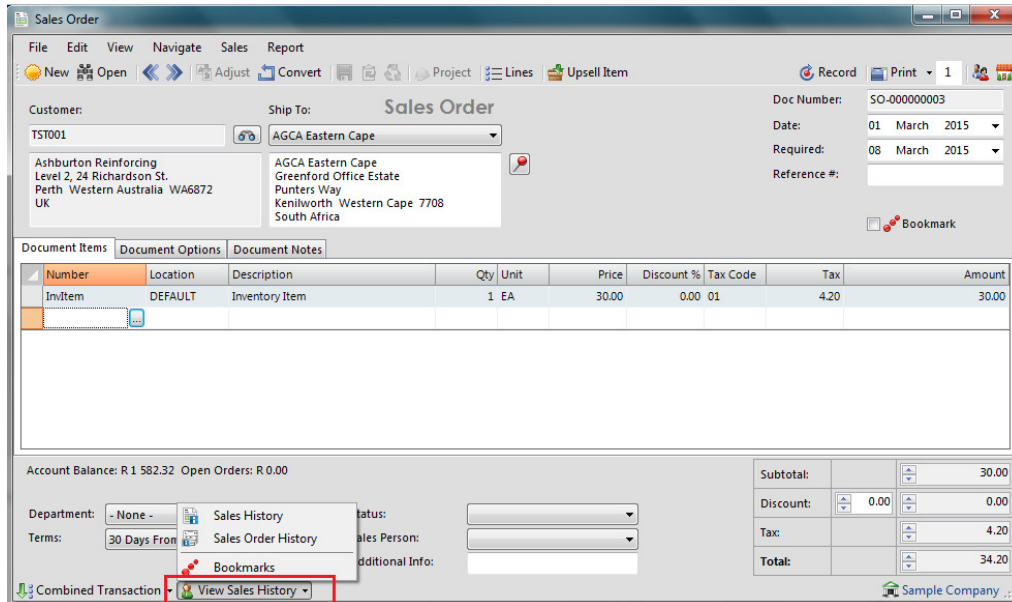


		2011									Total
		4-April	5-May	6-June	7-July	8-August	8-September	9-September	10/7/2011		
Customer	Item Description	5/7/2011	6/7/2011	7/7/2011	8/7/2011	8/10/2011	8/11/2011	8/29/2011	9/7/2011	10/7/2011	
	BROWN BREAD - CASH	0.00	0.00	0.00	0.00	0.00	0.00	0.00	0.00	0.00	0.00
	BUNS - CASH	0.00	0.00	0.00	0.00	0.00	0.00	0.00	0.00	0.00	0.00
	COOLDRINK	0.00	0.00	0.00	0.00	0.00	0.00	0.00	0.00	0.00	0.00
	Unsliced bread for cash	0.00	0.00	0.00	0.00	0.00	0.00	0.00	0.00	0.00	0.00
	WHITE BREAD - CASH	0.00	0.00	0.00	0.00	0.00	0.00	0.00	0.00	0.00	0.00
	YELLOW BREAD - CASH	0.00	0.00	0.00	0.00	0.00	0.00	0.00	0.00	0.00	0.00
	BROWN BREAD - CASH	10,096.30	12,959.00	12,119.00	10,766.24	597.00	408.00	7,346.50	5,017.00	8,560.00	98,867.85
	BUNS - CASH	1,352.30	414.00	1,105.00	890.50	78.00	78.00	312.30	162.50	1,085.50	6,559.30
	COOLDRINK	0.00	329.00	241.67	283.33	0.00	0.00	0.00	0.00	0.00	1,839.12
	Cooldrink - 1.25L COKE	0.00	0.00	0.00	0.00	0.00	0.00	0.00	0.00	0.00	916.67
	Cooldrink - 2L Coke	0.00	0.00	0.00	0.00	0.00	0.00	0.00	0.00	0.00	100.88
	Cooldrink - 330ml Coke	0.00	0.00	0.00	0.00	0.00	0.00	0.00	0.00	0.00	39.91
	Cooldrink - Fizzy	0.00	0.00	0.00	0.00	0.00	0.00	0.00	0.00	0.00	42.98
	Unsliced bread for cash	5,302.50	8,661.00	14,290.00	11,291.40	394.74	515.79	326.32	6,188.16	11,071.20	73,730.57
	WHITE BREAD - CASH	11,759.30	15,171.50	13,688.47	13,172.34	759.74	493.16	13,269.82	5,116.49	40,500.00	144,164.30
	YELLOW BREAD - CASH	1,257.00	1,024.00	805.00	970.00	65.00	0.00	528.80	300.00	399.50	9,275.83
	BROWN BREAD - CASH	0.00	0.00	0.00	0.00	0.00	0.00	0.00	0.00	0.00	0.00
	BUNS - CASH	0.00	0.00	0.00	0.00	0.00	0.00	0.00	0.00	0.00	0.00
	COOLDRINK	0.00	0.00	0.00	0.00	0.00	0.00	0.00	0.00	0.00	0.00
	Cooldrink - 1.25L COKE	0.00	0.00	0.00	0.00	0.00	0.00	0.00	0.00	0.00	0.00
	Cooldrink - 2L Coke	0.00	0.00	0.00	0.00	0.00	0.00	0.00	0.00	0.00	0.00
	Cooldrink - 330ml Coke	0.00	0.00	0.00	0.00	0.00	0.00	0.00	0.00	0.00	0.00
	Cooldrink - Fizzy	0.00	0.00	0.00	0.00	0.00	0.00	0.00	0.00	0.00	0.00
	Unsliced bread for cash	0.00	0.00	0.00	0.00	0.00	0.00	0.00	0.00	0.00	0.00
	WHITE BREAD - CASH	0.00	0.00	0.00	0.00	0.00	0.00	0.00	0.00	0.00	0.00
Equality Foods	Sales	0.00	231,411.05	211,089.65	180,667.35	0.00	0.00	0.00	135,500.68	150,720.46	1,176,936.50
Total		29,981.00	267,398.63	253,810.19	197,751.75	1,894.48	1,494.95	24,282.95	152,285.03	185,883.16	1,512,333.91

5. All Reports– Included buttons for Email and Export (PDF, Excel & Word)
6. Inventory (Reports) – Created a new report (“Pricelist Change Log”), this will show the user what the Current Selling Price was and what the New Selling Price is.
7. Inventory (Synopsis by Location Report) – Implemented a change to the Location dropdown box, to now show all Locations (Warehouse, In-Transit & Repairs), instead of only be able to report on Warehouse locations.
8. AP (Invoices) – We have renamed “Landed Cost Adjustment” to “Additional Costs”, and have changed the image on the menu option as well as added a function button on the main processing screen for ease of use. We have added a new editable column “Additional Costs”, which will allow the user to apportion the costs “Manually” or by using the “Weighted Cost” or “Weighted Quantity” functions. The “OK” button will only be available if the “Total Additional Costs” amount equals the “Total Amount” entered. A validation check has been included, to confirm overwriting of the Last Paid Price (per unit) when the Last Unit Price is less than the Last Paid Price. In addition we have included a new feature, on the “Previous Add Costs” column, where you will be able to view all the Previous Additional costs that have been added to this purchase, and track all Landed Unit changes.
9. AR (Open Quotes) – We have included a new report to display Open Quotes.

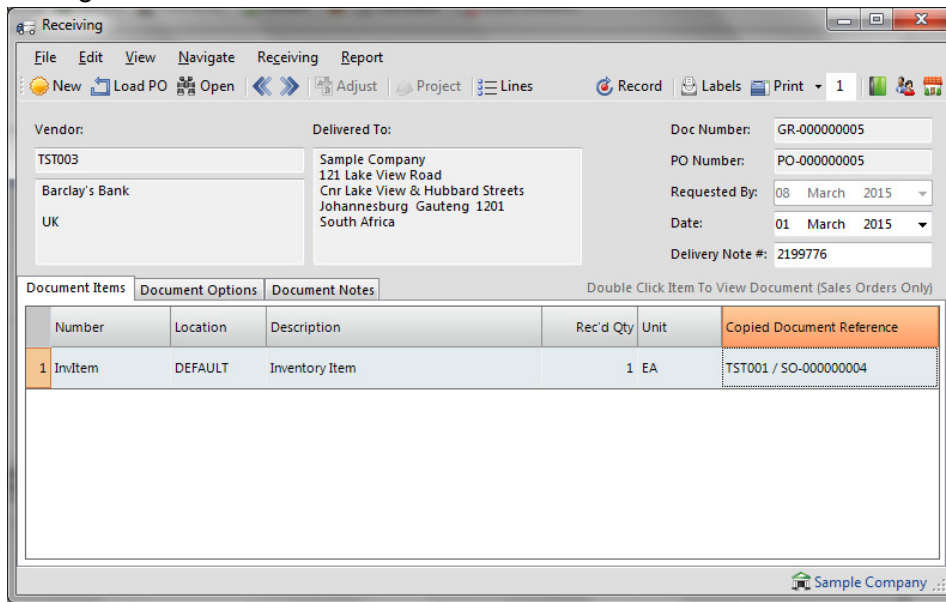
Palladium Enterprise (V12.1.150)

1. Added the ability to “View Sales History” on the status bar at the bottom of the Sales processing screens that allows “Sales History” and “Sales Order History” data to be viewed or lines to be copied back to the current processing document. The same facility has been applied to all Purchase documents to view and copy across all Supplier Purchase history as well. This lookup also allows you to change to any Customer or Supplier for advanced copying or lookups. Double clicking on the document from the History lookup will allow you to drill to the original document.

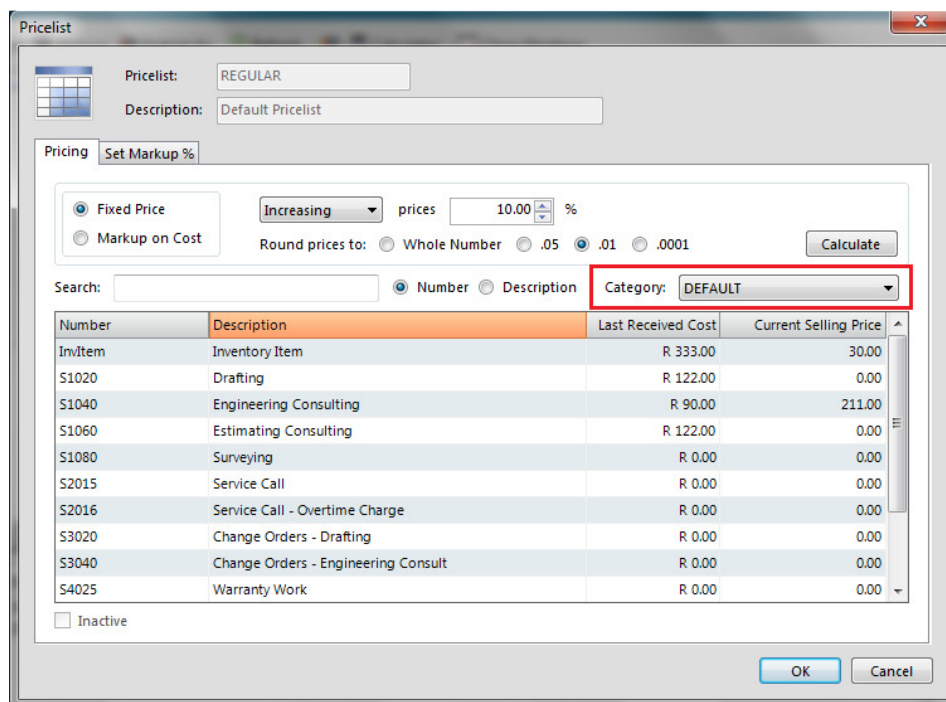


2. A document Bookmark functionality has also been added to allow you to bookmark any document for later recall and reference. Users can view any bookmarked document from any processing screen allowing you the option to copy information from these documents to any other document type, offering a 360-Degree copy or quick-reference function. Double clicking on the document from the Bookmark lookup will allow you to drill to the original document.
3. Receipt & Payment Journal – Added a faint wallpaper within the background to display “**RECEIPTS**” and “**PAYMENTS**”, and have also extended the tab selections for ease of viewing. The tab order has also been changed to display the “Payments” tab (as is more commonly used) first as default.
4. Inventory Aging Report – Right justified all value columns.
5. All Report Screens now included buttons for Email and Direct Export (PDF, Excel & Word).
6. Inventory & Services – We have included validation to when Suppliers for a specific inventory item to select a Preferred Supplier. In doing so, the system will default this Preferred Supplier when adding the item in the Freehand Quotes function with the ability to amend the default, or recommended Supplier if required.
7. Request for Credit – We have created a separate icon for this function as well as an additional validation which will only filter on Credit Request documents when navigating through documents.
8. Allow the Mark-Up % on the Freehand Quotes to be 0%
9. AP (Reports) – Created a new Supplier Transaction Report, with the filtering of Vendors.
10. AR (Reports) – Created a new Customer Transaction Report, with the filtering of Customers.

- Warehouse Receiving – Included the Copied (created from) Reference Number within the displaying grid to easily identify the customer for whom the item was ordered. Double click on the document to drill down to the original for detail.

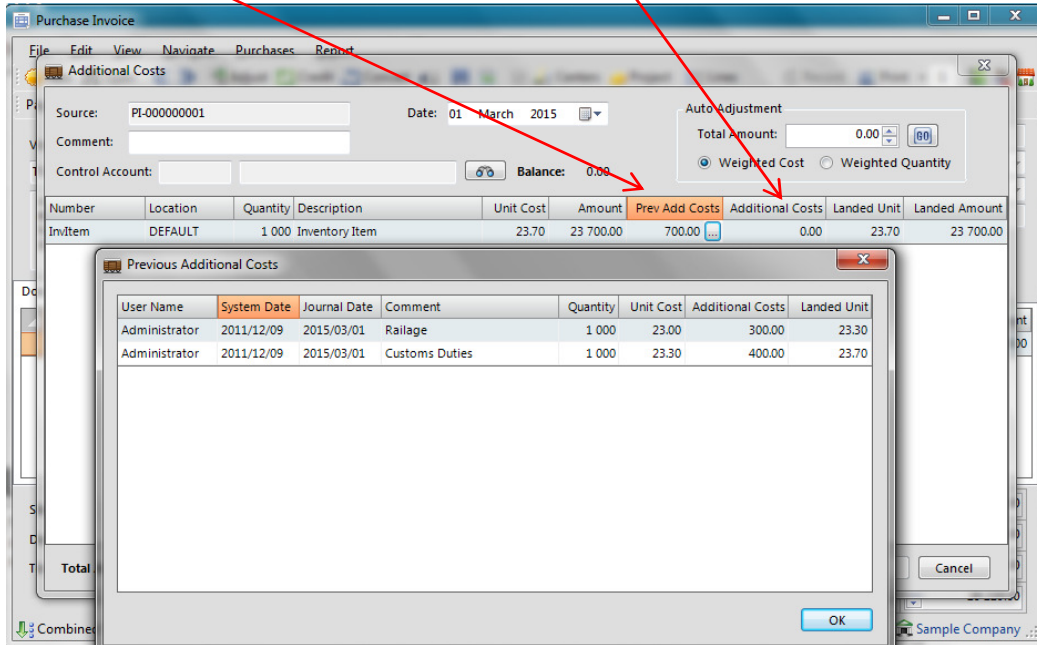


- Freehand Quotes – We have added a new validation that the Customer must exist before creating a Purchase Document from the Freehand Quote. This is in order to track customer details at time of receiving the goods per point 11 above.
- Inventory Pricelist – We have added a new “Category” filter to allow for group price increases to be set at item category group level. This is also supported by the Mark-up on Cost pricelists where a default mark-up can be set per product Category rather than on a per Pricelist basis.

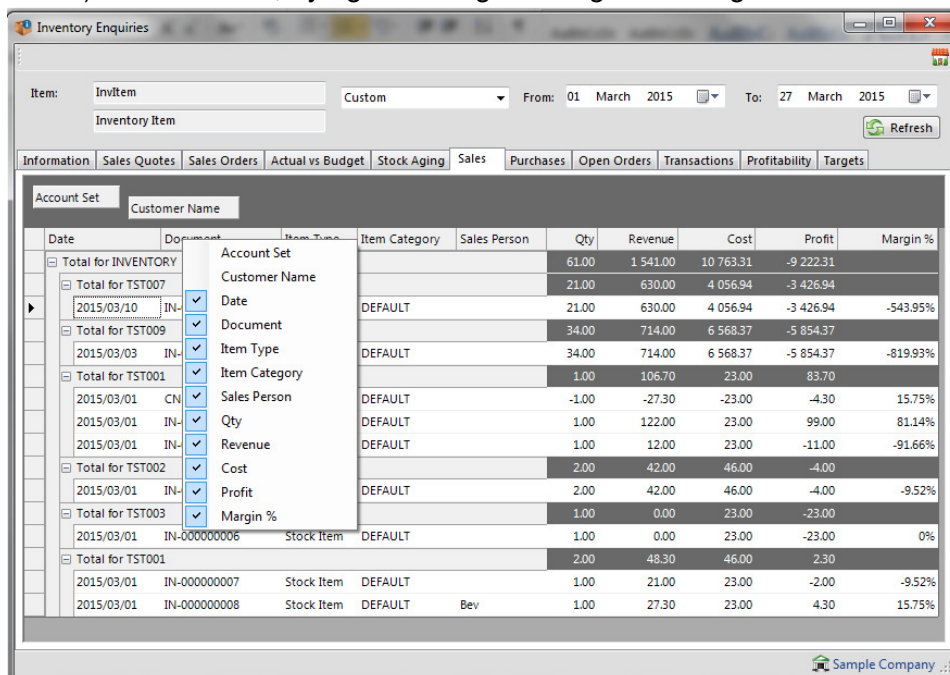



- Inventory Synopsis by Location Report has been amended to include all Locations (Warehouse, In-Transit & Repairs), instead of only Warehouse locations.
- The General Ledger Comparative Income Statement layout has been changed and the Box outline has been removed.

16. Purchase Invoices – We have renamed “Landed Cost Adjustment” to “Additional Costs”, and also added a shortcut image on the Supplier Invoice Menu Bar.
17. Additional Costs – We have added a new editable column “Additional Costs”, which will allow the user to apportion the additional costs Manually or by using the “Weighted Cost” or “Weighted Quantity” options. The “OK” button will only be available if the “Total Additional Costs” amount equals the “Total Amount” entered. A validation check has been included, to confirm overwriting of the Last Paid Price (per unit) when the New Last Unit Price is less than the Prevailing Last Unit Price. We have also included a new feature to include the “Previous Additional Costs” in a view-only column with a drill-down to all previous additional cost accrual charges relating to that goods received, to ensure that all costs have been correctly provided for.

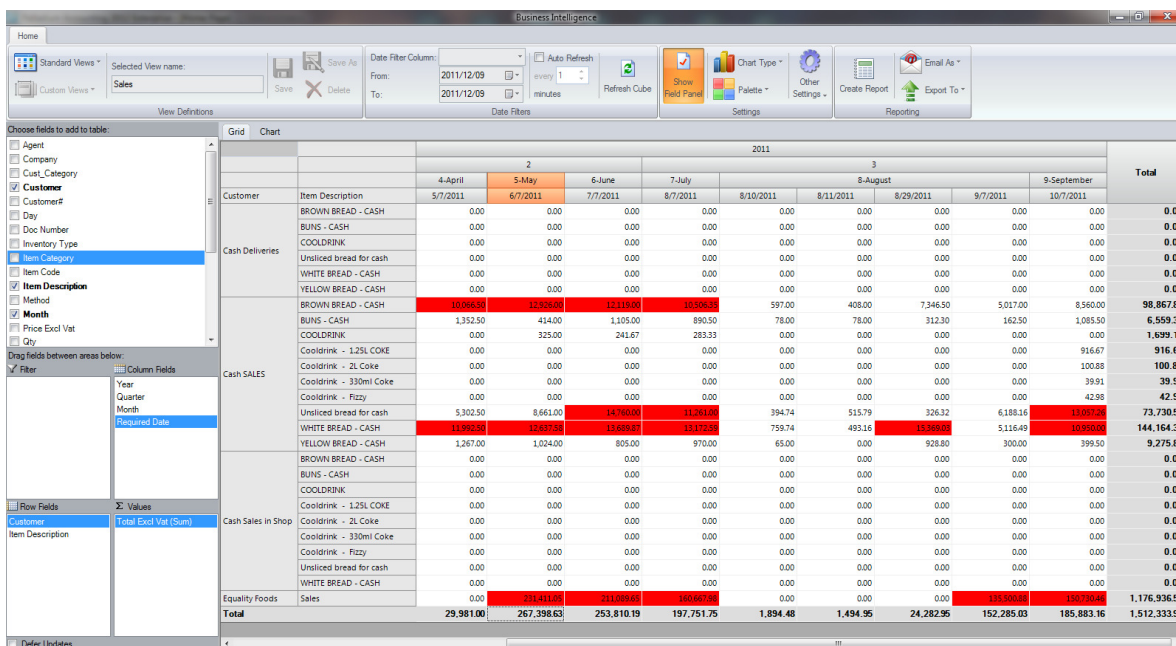


18. The User Security Access rights has been extended to the General Ledger Transaction Report. If specific accounts have been enabled for Account Security to specific users, only these accounts will be shown within the GL Accounts list.
19. The Inventory and Supplier Enquiry functions have been enhanced to include the BI-Style Grid Groupings as we have in the Accounts Receivable modules. In addition columns can now be excluded (hidden) or un-hidden, by right clicking on the grid. Settings are saved for future use.



20. Inventory Items (Upsell Tab) – We have included a label to explain the express purpose of the checkboxes per processing document. Ie “Check Boxes To Auto-Invoke Reminder”.
21. Inventory Items – we have Included a new button to print labels on the Item Masterfile. This will allow for the standard item barcode printing with the option to select how many Labels to print. This button is only enabled when a barcode exists within the database. The label Printing function on the GRV's has not changed.
22. Google Maps has been integrated to all areas of the application from masterfiles to processing documents that includes an address, allowing you to obtain a map to a customer or supplier in a click. Lookout for the location pin icon .
23. We have included a Local Amount Value in the Receipts function where there is a Foreign value receipt. This alleviated the need to calculate the foreign currency exchange rate to enter the local value. Should the rate of exchange be entered, the local value will be calculated, and vice versa.
24. We have enhanced the Customer Aged Report to allow the option of using the Document Date, or Document Due Date as well as to Include Invoice Paid selection rather than just have that function available in the Detailed Aging Report.
25. The Customer Receipt has been changed as follows; the (“Owing” label has been amended to “Outstanding” and amended the last column, “Total” to “Paid”). Also when opening a Receipt that contains a Deposit, this now shows the deposit row in Red.
26. A complete new Business Intelligence OLAP section has been added to the application, with a number of standard Cubes. Each cube contains standard views (or user data groupings and formats) with the ability for users to create an unlimited number of custom data groups and formats per cube.

Business Partners can create their own SQL data sets (in the form of views) and attach custom cubes to these views or simply add these cubes to one of our standard views. Each cube, standard or custom, comes with its own user security rights so custom cubes could be created for individuals, such as a sales rep having the ability to have complete Business Intelligence to their sales only. Use conditional formatting and other excel features to highlight anomalies at a glance.



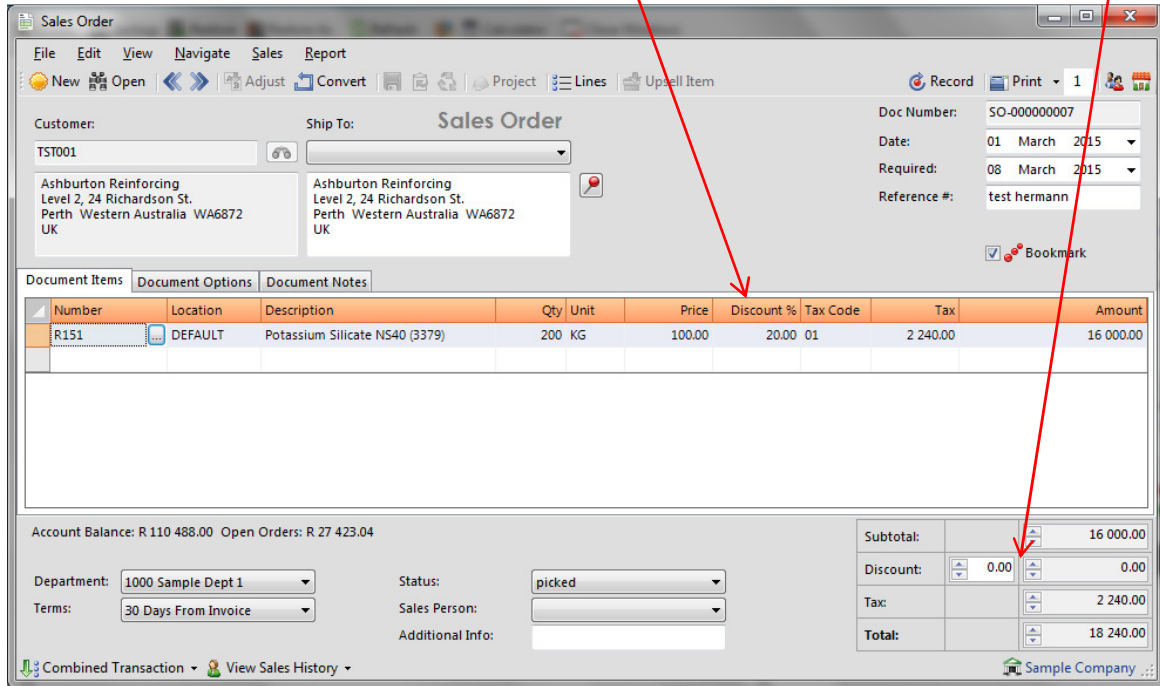
The screenshot displays the Business Intelligence OLAP application interface. The main window shows a data grid for the year 2011, with columns for months from April to September and a Total column. The grid is organized into sections: Cash Deliveries, Cash SALES, Cash Sales in Shop, and Equality Foods. The 'Total' row at the bottom shows a total of 29,981.00 for April, 267,398.83 for May, 253,810.19 for June, 197,751.75 for July, 1,894.48 for August, 1,494.95 for September, and 1,512,333.91 for the Total. The interface includes a toolbar with options like 'Save As', 'Delete', 'Auto Refresh', 'Refresh Cube', 'Chart Type', 'Settings', 'Create Report', and 'Export To'. A sidebar on the left allows for selecting fields to add to the table, such as Agent, Company, Customer, and Item Description.

		2011										Total
		4-April	5-May	6-June	7-July	8-August	8-August	8-August	8-August	8-August	9-September	
Customer	Item Description	5/7/2011	6/7/2011	7/7/2011	8/7/2011	8/10/2011	8/11/2011	8/29/2011	9/7/2011	10/7/2011		
Cash Deliveries	BROWN BREAD - CASH	0.00	0.00	0.00	0.00	0.00	0.00	0.00	0.00	0.00	0.00	
	BUNS - CASH	0.00	0.00	0.00	0.00	0.00	0.00	0.00	0.00	0.00	0.00	
	COOLDRINK	0.00	0.00	0.00	0.00	0.00	0.00	0.00	0.00	0.00	0.00	
	Unsliced bread for cash	0.00	0.00	0.00	0.00	0.00	0.00	0.00	0.00	0.00	0.00	
Cash SALES	WHITE BREAD - CASH	0.00	0.00	0.00	0.00	0.00	0.00	0.00	0.00	0.00	0.00	
	YELLOW BREAD - CASH	0.00	0.00	0.00	0.00	0.00	0.00	0.00	0.00	0.00	0.00	
	BROWN BREAD - CASH	10,096.00	15,928.00	12,119.00	10,506.33	597.00	408.00	7,346.50	5,017.00	8,560.00	98,867.85	
	BUNS - CASH	1,352.50	414.00	1,105.00	890.50	78.00	78.00	312.30	162.50	1,085.50	6,599.30	
Cash Sales in Shop	COOLDRINK	0.00	325.00	241.67	283.33	0.00	0.00	0.00	0.00	0.00	1,899.12	
	Cooldrink - 1.25L COKE	0.00	0.00	0.00	0.00	0.00	0.00	0.00	0.00	0.00	916.67	
	Cooldrink - 2L Coke	0.00	0.00	0.00	0.00	0.00	0.00	0.00	0.00	0.00	100.88	
	Cooldrink - 330ml Coke	0.00	0.00	0.00	0.00	0.00	0.00	0.00	0.00	0.00	39.91	
Equality Foods	Cooldrink - Fizzy	0.00	0.00	0.00	0.00	0.00	0.00	0.00	0.00	0.00	42.98	
	Unsliced bread for cash	5,303.50	8,661.00	14,330.00	11,401.48	394.74	515.79	336.32	6,188.16	1,807.58	73,730.57	
	WHITE BREAD - CASH	14,096.50	15,071.50	13,688.87	15,173.58	759.74	493.16	13,850.00	5,116.49	10,959.00	144,164.30	
	YELLOW BREAD - CASH	1,267.00	1,024.00	805.00	970.00	65.00	0.00	928.80	300.00	399.50	9,275.83	
Total	BROWN BREAD - CASH	0.00	0.00	0.00	0.00	0.00	0.00	0.00	0.00	0.00	0.00	
	BUNS - CASH	0.00	0.00	0.00	0.00	0.00	0.00	0.00	0.00	0.00	0.00	
	COOLDRINK	0.00	0.00	0.00	0.00	0.00	0.00	0.00	0.00	0.00	0.00	
	Cooldrink - 1.25L COKE	0.00	0.00	0.00	0.00	0.00	0.00	0.00	0.00	0.00	0.00	
Total	Cooldrink - 2L Coke	0.00	0.00	0.00	0.00	0.00	0.00	0.00	0.00	0.00	0.00	
	Cooldrink - 330ml Coke	0.00	0.00	0.00	0.00	0.00	0.00	0.00	0.00	0.00	0.00	
	Cooldrink - Fizzy	0.00	0.00	0.00	0.00	0.00	0.00	0.00	0.00	0.00	0.00	
	Unsliced bread for cash	0.00	0.00	0.00	0.00	0.00	0.00	0.00	0.00	0.00	0.00	
Total	WHITE BREAD - CASH	0.00	0.00	0.00	0.00	0.00	0.00	0.00	0.00	0.00	0.00	
	YELLOW BREAD - CASH	0.00	0.00	0.00	0.00	0.00	0.00	0.00	0.00	0.00	0.00	
	BROWN BREAD - CASH	0.00	0.00	0.00	0.00	0.00	0.00	0.00	0.00	0.00	0.00	
	BUNS - CASH	0.00	0.00	0.00	0.00	0.00	0.00	0.00	0.00	0.00	0.00	
Total	COOLDRINK	0.00	0.00	0.00	0.00	0.00	0.00	0.00	0.00	0.00	0.00	
	Cooldrink - 1.25L COKE	0.00	0.00	0.00	0.00	0.00	0.00	0.00	0.00	0.00	0.00	
	Cooldrink - 2L Coke	0.00	0.00	0.00	0.00	0.00	0.00	0.00	0.00	0.00	0.00	
	Cooldrink - 330ml Coke	0.00	0.00	0.00	0.00	0.00	0.00	0.00	0.00	0.00	0.00	
Total	Cooldrink - Fizzy	0.00	0.00	0.00	0.00	0.00	0.00	0.00	0.00	0.00	0.00	
	Unsliced bread for cash	0.00	0.00	0.00	0.00	0.00	0.00	0.00	0.00	0.00	0.00	
	WHITE BREAD - CASH	0.00	0.00	0.00	0.00	0.00	0.00	0.00	0.00	0.00	0.00	
	YELLOW BREAD - CASH	0.00	0.00	0.00	0.00	0.00	0.00	0.00	0.00	0.00	0.00	
Total	Equality Foods	0.00	211,411.00	211,009.00	160,667.00	0.00	0.00	0.00	153,500.00	150,750.00	1,176,936.50	
	Sales	0.00	211,411.00	211,009.00	160,667.00	0.00	0.00	0.00	153,500.00	150,750.00	1,176,936.50	
	Total	29,981.00	267,398.83	253,810.19	197,751.75	1,894.48	1,494.95	24,282.95	152,285.03	185,883.16	1,512,333.91	

27. The Pastel Partner Data Conversion has been activated to allow for Masterfile Conversions directly into Palladium.

Palladium Remote Sales Terminal (RST) (V12.1.30)

1. Customer Masterfile (Shipping Locations Tab) – We have added a new column and selection combo box for “Delivery Routes”.
2. We have added the Google Maps feature to both the Customer Masterfiles and Sales Order Customer Address processing functions.
3. Orders & Quotes – We have included the option to include Document Status Types to manage the different User-Defined Statuses.
4. Orders & Quotes – We have Included Item line Discounts as well as an Overall Document Discount feature and now have the option to apply discounts based on a Customer Discount Matrix Table.



5. Added a menu item for “View Sales History” on the status bar at the bottom of the processing screen, this allows “Sales Order History” data to be viewed or lines to be copied back to the original processing documents.
6. Included the Document Bookmarking Functionality in Sales Orders for easy recall.
7. Request for Credit – We have created a separate icon for this function as well as an additional validation which will only filter on Credit Request documents when navigating through documents..
8. The Synchronize has been enhanced to include the following:
 - Customer Category table - used within the Customers Maintenance screen.
 - Optional (Delivery) fields.
 - Delivery Route table.
 - Credit Note Reason Types - used on the processing screen.
 - Document Status Types - used on the processing screen.
 - Discount Matrix - used on the processing screen for line discounts.
 - Sales Discount Linked Account (Linked Accounts) - used on the processing screen for overall discounts.
9. Reports – We have Included buttons for Email and Export (PDF, Excel & Word) to all reports.